

ASSOCIATED EQUIPMENT CORPORATION

5043 Farlin Avenue

St. Louis, MO 63115

(314) 385-5178

FAX (314) 385-3254

36-VOLT BATTERY CHARGER MODEL 6053A LESTRONIC II MODEL 09700

This equipment has been manufactured to Associated Equipment Corporation specifications by Lester Electrical of Nebraska, Inc. It has been designed to provide you with years of reliable, safe operation. In the unlikely event of malfunction, or should replacement parts be required, please contact the original equipment manufacturer directly:

Lester Electrical of Nebraska, Inc.
625 West A Street
Lincoln NE 68522
402 477-8988
service@lesterelectrical.com

PLEASE SAVE THESE IMPORTANT SAFETY AND OPERATING INSTRUCTIONS

For correct operation of the equipment, it is important to read and be familiar with this entire manual before installing and operating the charger.
DO NOT DISCARD THIS MANUAL AFTER READING.



LOOK FOR THIS SYMBOL TO POINT OUT SAFETY PRECAUTIONS. IT MEANS: *BECOME ALERT—YOUR SAFETY IS INVOLVED.* IF YOU DO NOT FOLLOW THESE SAFETY INSTRUCTIONS, INJURY OR PROPERTY DAMAGE CAN OCCUR.

⚠ WARNING: NOT FOR USE WHEN DC CORD IS PERMANENTLY CONNECTED TO THE BATTERIES.

1. Connect power supply cord to properly grounded outlet of the proper voltage and frequency as specified on the charger nameplate. Circuit breaker or fuse protection in the AC line must be adequate to handle the input power requirements. When it is necessary to use an AC extension cord to the charger, use a three conductor, 12 gauge cord with ground and keep as short as possible. If DC output cord is connected to batteries, charger will automatically turn on after a short delay.

2. Connect DC output cord to batteries. Charger turns on automatically. To prevent arcing and burning of the battery and charger plug contacts, be sure to attach the plugs firmly and securely together.

⚠ CAUTION: DO NOT REMOVE DC CORD FROM BATTERIES WHEN CHARGER IS OPERATING. IF CHARGE CYCLE MUST BE INTERRUPTED, DISCONNECT POWER SUPPLY CORD BEFORE REMOVING DC CORD.

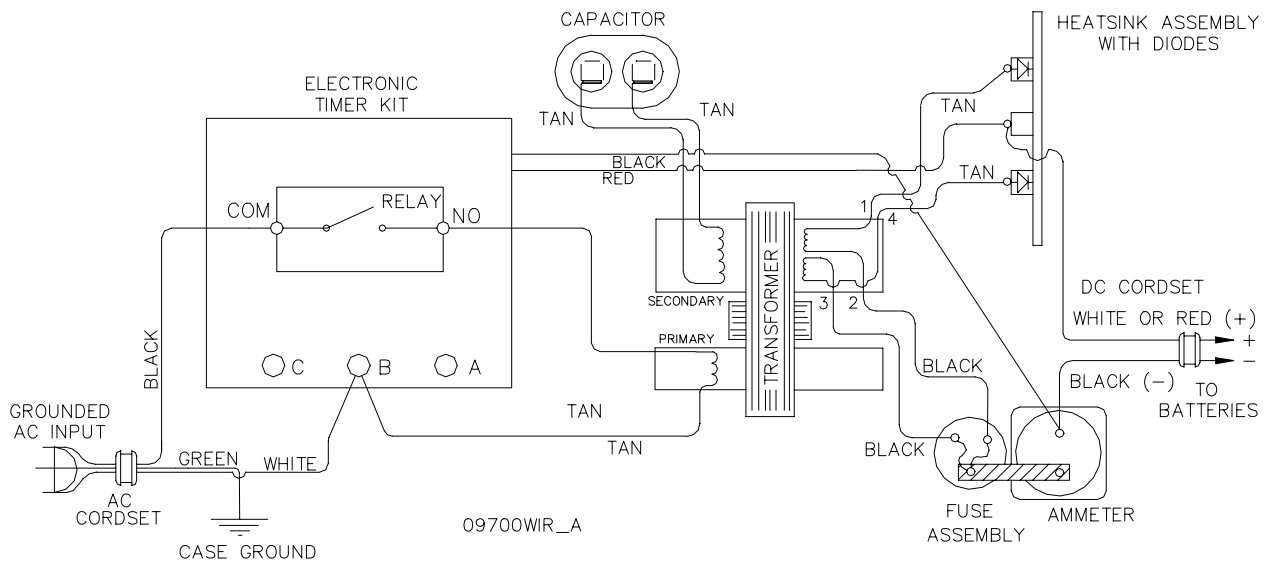
3. Monitor ammeter for correct charge rate. Refer to instructions printed on charger case to determine proper charge rate. Normal charging at the finish charge rate for the last 3 to 5 hours is important to achieve equalization of all battery cells every time

the batteries are charged. New batteries or batteries charged in cold temperatures (below 50°F) will require more time to achieve full charge.

- Charger turns off automatically when batteries are fully charged.

⚠ CAUTION: IN THE UNLIKELY EVENT THAT THE CHARGER DOES NOT TURN OFF AUTOMATICALLY, OVERCHARGING AND POSSIBLE BATTERY DAMAGE MAY RESULT. FOR BEST BATTERY LIFE, CHECK TO BE SURE THE CHARGER HAS TURNED OFF PROPERLY AFTER EACH CHARGE CYCLE.

WIRING DIAGRAM



PARTS LIST

PART NO.	QTY.	DESCRIPTION
09698S	1	CASE ASSEMBLY
09699S	1	TRANSFORMER ASSEMBLY
16354S	1	HEATSINK ASSEMBLY, W/ DIODES
* 04127S	1	AMMETER
** 16369S	1	AMMETER
24925S	1	ELECTRONIC TIMER ASSEMBLY
*** 04484S	1	RELAY, FOR ELECTRONIC TIMER
**** 23385S	1	RELAY, FOR ELECTRONIC TIMER
02390S	1	CAPACITOR, 6.0 MFD, 660 VAC
08776S	1	FUSE ASSEMBLY
02028S	2	BUSHING, 7W-2, INSULATOR FOR CORDSETS
02506S	1	CORDSET, AC
08512S	1	CORDSET, DC, NO PLUG

* FOR USE W/ CHARGERS BUILT BEFORE 12/90

** FOR USE W/ CHARGERS BUILT AFTER 12/90

*** FOR USE WITH CHARGERS BUILT BEFORE 09/04

**** FOR USE WITH CHARGERS BUILT AFTER 09/04

LIMITED WARRANTY

Lester Electrical warrants each new Lester Battery Charger for defects in material and workmanship for a period of two (2) years from the date of manufacture of the complete unit.

Repairs can be made at the Lester Electrical factory. To do so, **FIRST** obtain a "Return Material Authorization" number by calling the Service Department of Lester Electrical (**402 477-8988**) or by e-mailing **service@lesterelectrical.com** and send the defective unit with transportation charges prepaid to:

Lester Electrical
625 West A Street
Lincoln, NE 68522-1794 USA
Attention: Service Department
RMA # _____

For repairs made at other than the Lester Electrical factory, Lester will provide only the replacement parts. Defective parts should be sent with transportation charges prepaid to the Lester Electrical factory at the address noted above.

If the unit or parts are found, in the reasonable judgment of Lester Electrical, to be defective in material or workmanship, repair, or replacement will be made by Lester Electrical without charge for parts or labor. Repair or replacement will be at the discretion of Lester Electrical, with replacements being made using current models or parts performing the equivalent function. Labor charges other than those incurred at the Lester Electrical factory are not covered under this warranty. All expenses associated with delivering defective items to the Lester Electrical factory and the expense of returning repaired or replaced items from the Lester Electrical factory to the owner will be paid for by the owner. All warranty work accomplished at the Lester Electrical factory will be completed within a reasonable time after receipt of defective items.

This warranty does not cover any semiconductor parts, such as diodes, which are vulnerable to electrical overloads beyond the control of Lester Electrical. Warranty on parts not manufactured by Lester Electrical, which include, but are not limited to, timers and ammeters is limited to the period specified in the original manufacturer's warranty.

This warranty does not cover any charger that has been subject to misuse, neglect, negligence, or accident, or operated in any way contrary to instructions specified on the charger case and in the owner's manual. No claim of breach of warranty shall be cause for cancellation of the contract of sale of any Lester Electrical charger. Lester Electrical assumes no responsibility for loss of time, inconvenience, or other damage, consequential or otherwise, resulting from a defective charger. All implied warranties (including merchantability) are limited in duration to two (2) years from date of manufacture warranty period.

Some states do not allow the exclusion or limitation of incidental or consequential damages, or limitations on how long an implied warranty lasts, so the above limitations may not apply to you. This warranty gives you specific legal rights, and you may also have other rights which vary from state to state.

Lester Electrical's obligation under this warranty is strictly and exclusively limited to the repair or replacement of defective items. Lester Electrical issues this warranty in good faith and with full confidence in the workmanship and quality of Lester Electrical products.